

WATER-WISE LANDSCAPING DEMISTIFIED

TRANSFORM YOUR LAWN INTO A WATER-SAVING OASIS WITH THESE SIMPLE STEPS!



STEP NO 1 SCAN IT & PLAN IT

Look at your landscape and take note of drainage, exposure, soil and existing plants. Think of how you'd like to utilize your lawn and map out areas for entertainment and play. Then, create a simple base drawing of your property. Make copies of the base drawing and play with different ideas as you map out the best areas to integrate low-water plants, turf alternatives and hardscapes.



STEP NO 2 GET YOUR HANDS DIRTY

Improve your soil by rototilling in 2 inches of organic compost 6 inches deep. This will help plants absorb water and promote proper drainage.



STEP NO 3 PLANT LIKE AN H₂O PRO

Select native low-water plants and trees that have already adapted to Colorado's dry climate, then plant your selections in different zones based on watering requirements. Keep in mind not only similar irrigation requirements but consider colors, height, and space required for mature growth.

VISIT [PLANTSELECT.ORG](https://plantselect.org) FOR A COMPREHENSIVE LIST OF WATER-WISE PLANTS AND TREES.



STEP NO 4 WATER WISELY

Amp up your water savings by following these tips:

- *Make sure to zone garden beds separately from turf areas, as they have different watering needs.*
- *Consider hand watering or drip irrigation for water-wise gardens.*
- *Use efficient rotary nozzles for spray zones.*
- *Use only ONE sprinkler head type for each zone and check for water-wasting leaks.*
- *Adjust your watering schedule to only water twice a week.*
- *Use a water-wise watering method like Cycle & Soak, which breaks watering times into three shorter cycles to prevent runoff and overwatering. Tap into the Cycle & Soak fact sheet to learn more.*



STEP NO 5 MAXIMIZE THE MULCH

Mulch minimizes evaporation, reduces weed growth and slows erosion while also adding visual interest. Apply it 3-4" deep around plants and trees, but avoid covering roots and stems. Turn your mulch at the start of each season.



STEP NO 6 KEEP IT UP

Maintain your landscape and maximize your water savings by pruning, weeding, mowing and fertilizing as needed. Follow the recommended minutes on the Watering Guide to program your sprinkler system correctly for your specified sprinkler head type and adjust seasonally.

**SURE, WATER-WISE LANDSCAPES
LOOK GREAT & INCREASE PROPERTY VALUE,
BUT THEY ALSO SAVE BUCKET-LOADS OF H2O AND \$\$\$!**

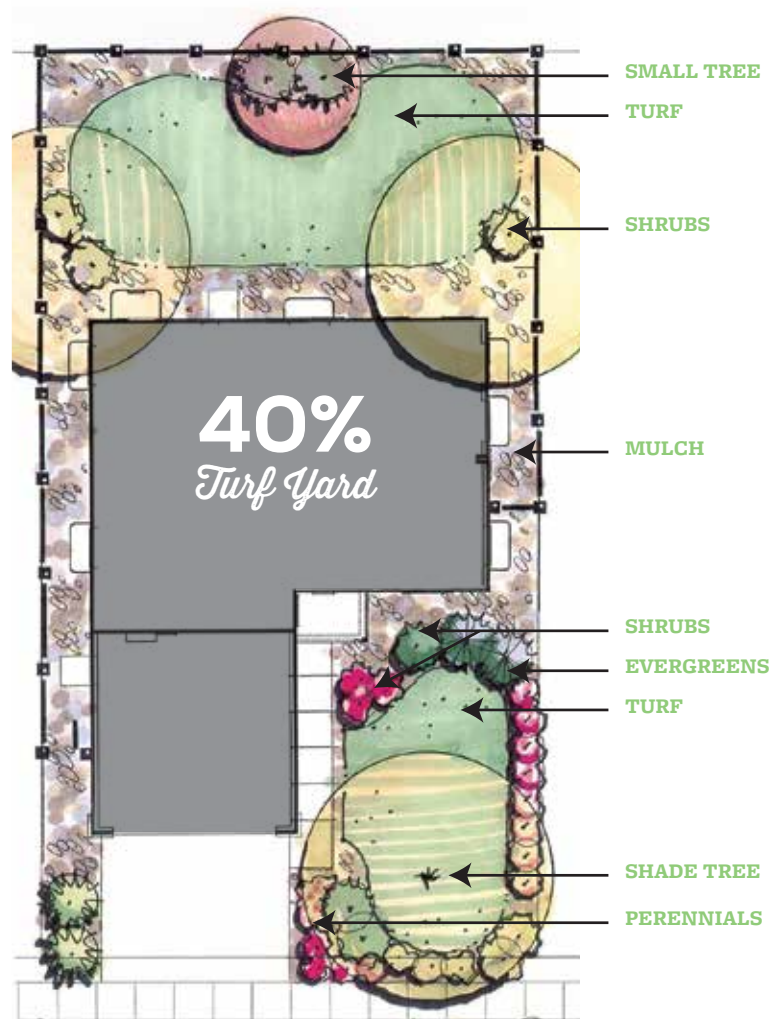
A

**3,500 SQ. FT. TURF
LANDSCAPE SOAKS UP
84,000 GALLONS
OF WATER A YEAR.**

THE SAME LANDSCAPE WITH
**40% TURF & 60%
ESTABLISHED
WATER-WISE PLANTS
ONLY NEEDS
49,000 GALLONS.**

THAT'S A TON OF WATER SAVED!

**146 TONS
TO BE EXACT!**



**TAP IN TO EVEN MORE DEMISTIFYING RESOURCES AND WATER-WISE GUIDES AT
THORNTONWATER.COM/DEMISTIFY**